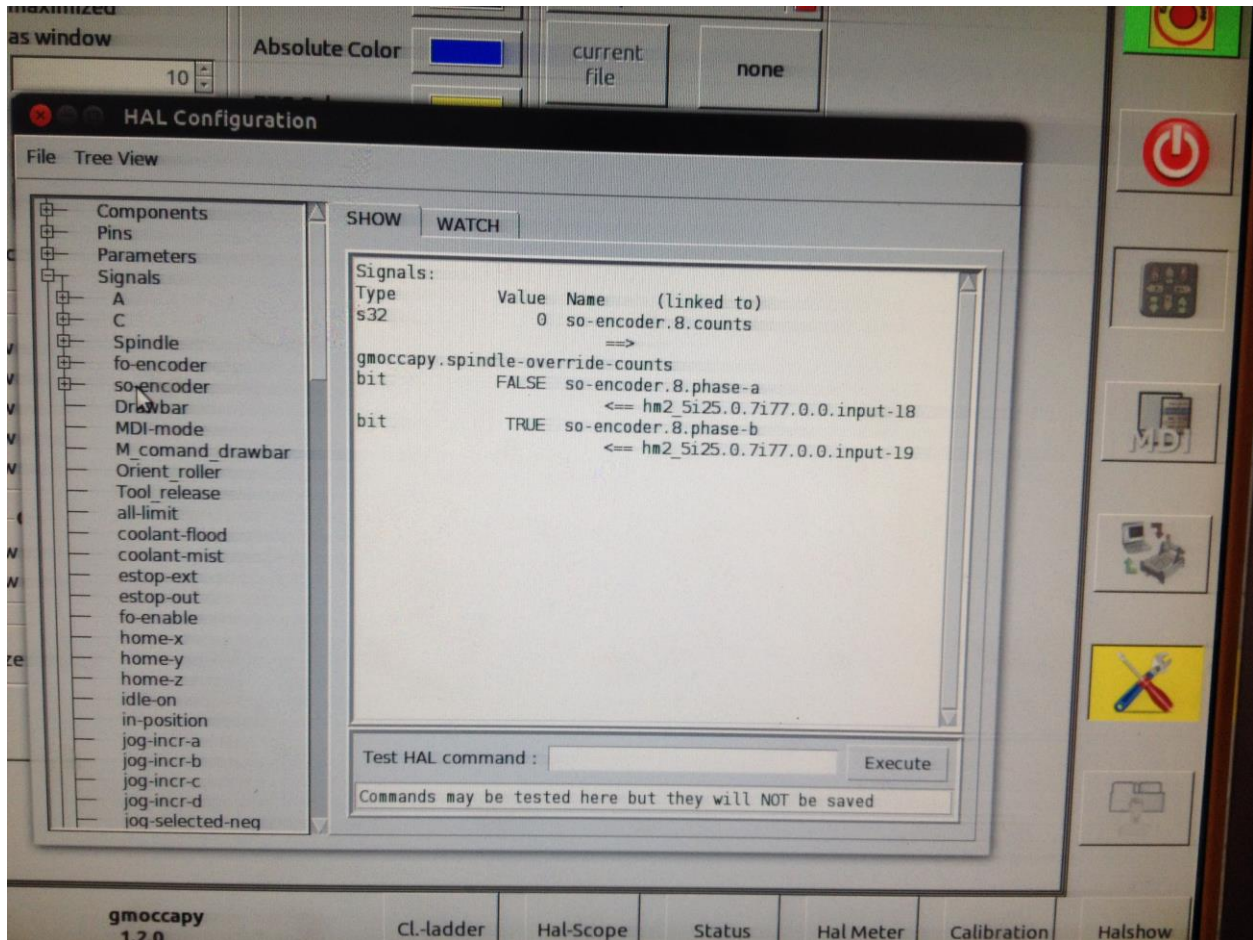
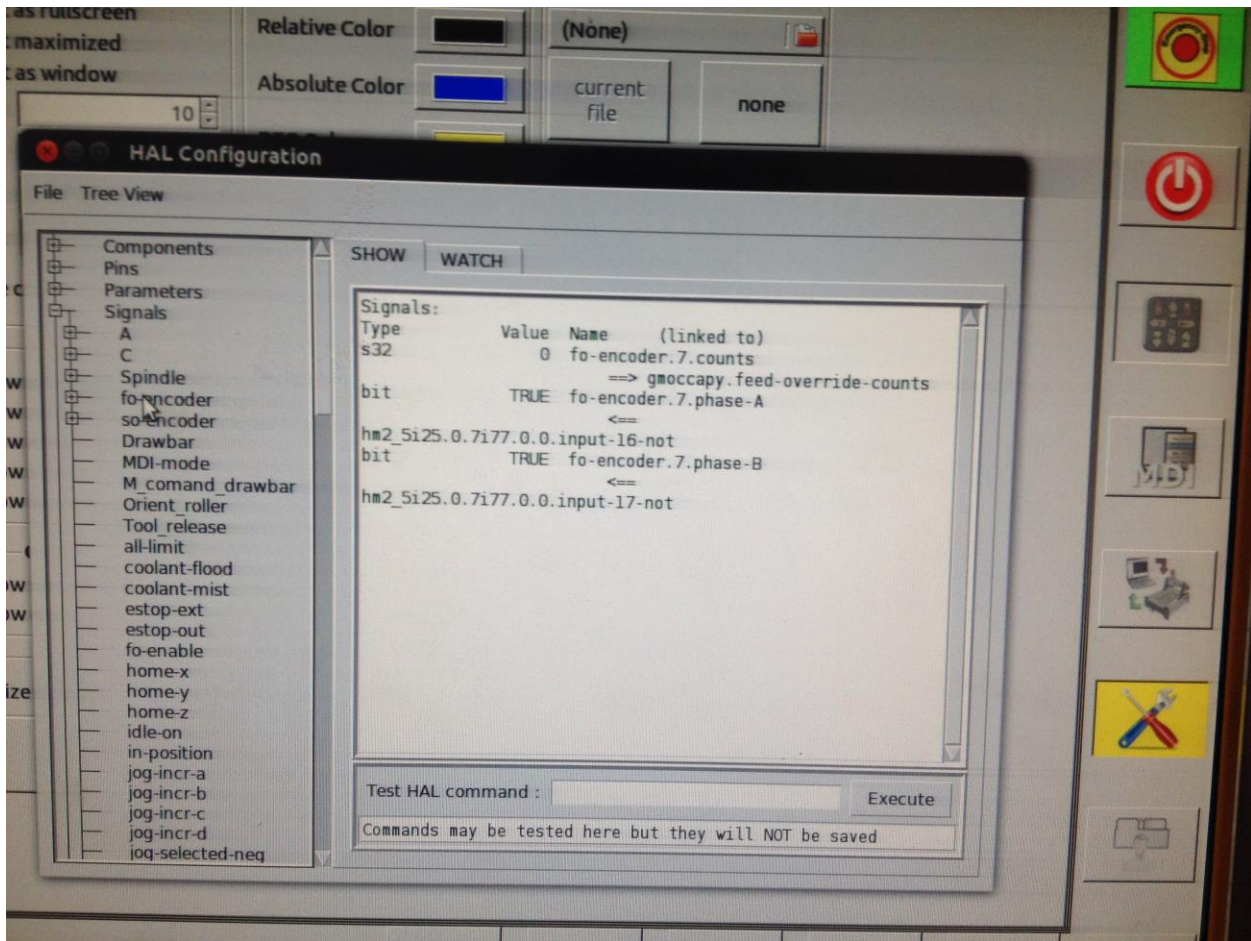


I'm trying to use some encoder switches to adjust feed and spindle overrides. I have a mesa 5i25-7i77 set-up. I using the option 3 and the pins 16,17,18,19 . I get a pulse in hal scope showing they are working but must be missing something in the hal file. I moved the encoder to gmocappy to the post hal as instructed but still doesn't work.





HAL Oscilloscope

Horizontal

Zoom

Pos

200 mSec  
per div

4000 sam  
at 500 Hz

TRIG

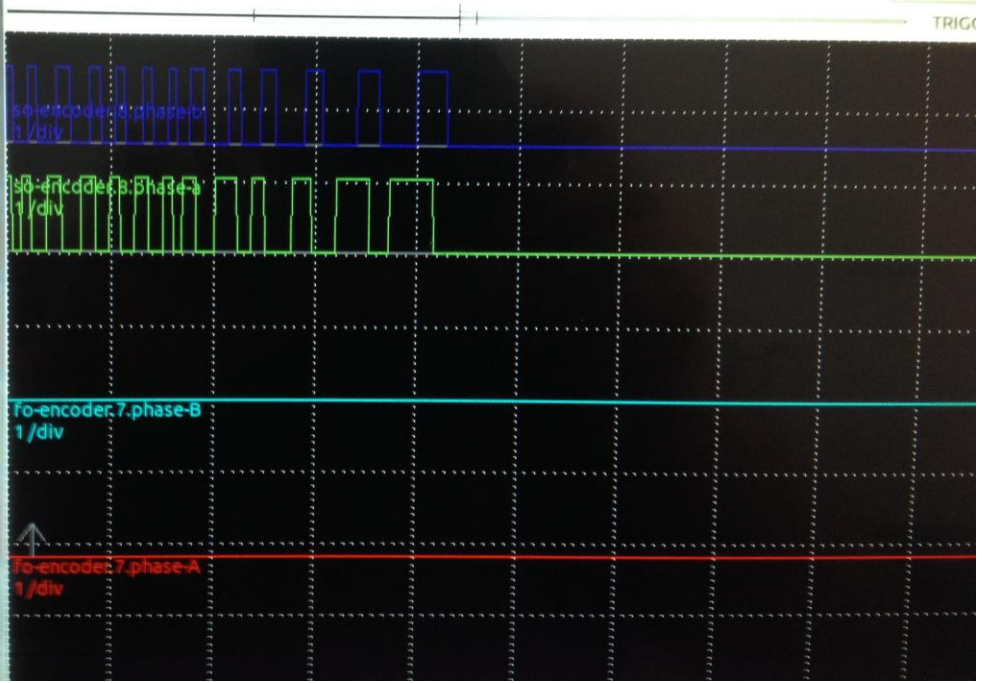
- 
- 
- 
- 
- 
- 
- 
- 

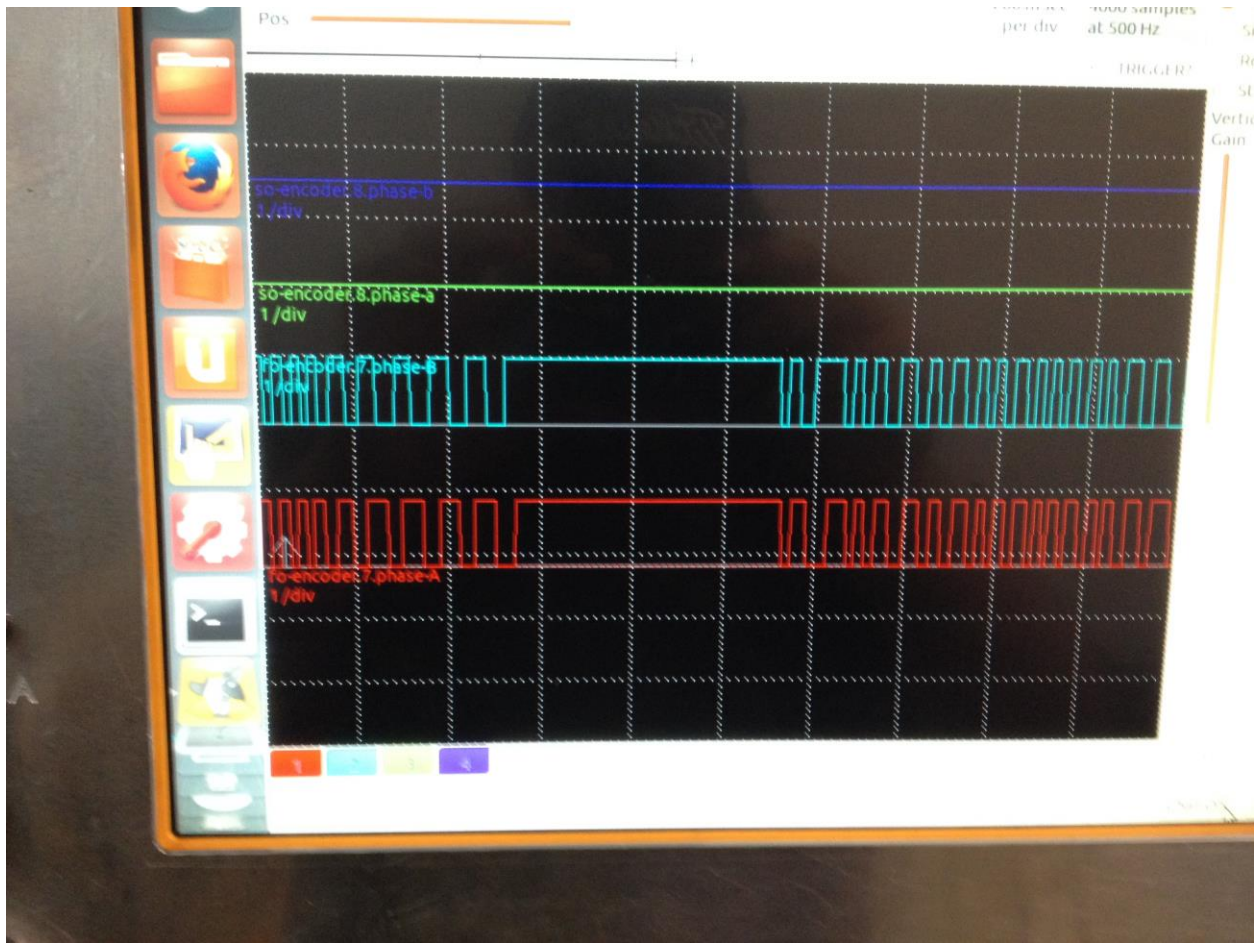
60-encoder.7.phase-B  
1/div

60-encoder.7.phase-A  
1/div

70-encoder.7.phase-B  
1/div

70-encoder.7.phase-A  
1/div







```
PARTNER
setp jogincr.in11      0.000000
setp jogincr.in12     0.000000
setp jogincr.in13     0.000000
setp jogincr.in14     0.000000
setp jogincr.in15     0.000000

linux64
# connect feed override increments - MPG
setp halui.feed-override.scale .1

Link to no
net fo-enable => halui.feed-override.count-enable
net fo-encoder.7.counts => halui.feed-override.counts

# connect spindle override increments - MPG
setp halui.spindle-override.scale .1
net so-enable => halui.spindle-override.count-enable
net so-encoder.8.counts => halui.spindle-override.counts

# ---motion control signals---
net in-position <= motion.in-position
net machine-is-enabled <= motion.motion-enabled

# ---digital in / out signals---
# ---estop signals---
net estop-out <= iocontrol.0.user-enable-out
net estop-ext => iocontrol.0.emc-enable-in

# ---toolchange signals for custom tool changer---
net tool-number <= iocontrol.0.tool-prep-number => classicladder.0.s32in-00
net tool-change-request <= iocontrol.0.tool-change => classicladder.0.in-03
net tool-change-confirmed => iocontrol.0.tool-changed => classicladder.0.out-03

PARTNER
launch PART
19-25-1
HMZ-Ser
Plain Text Tab Width: 8 Ln 499 Col 1
```

