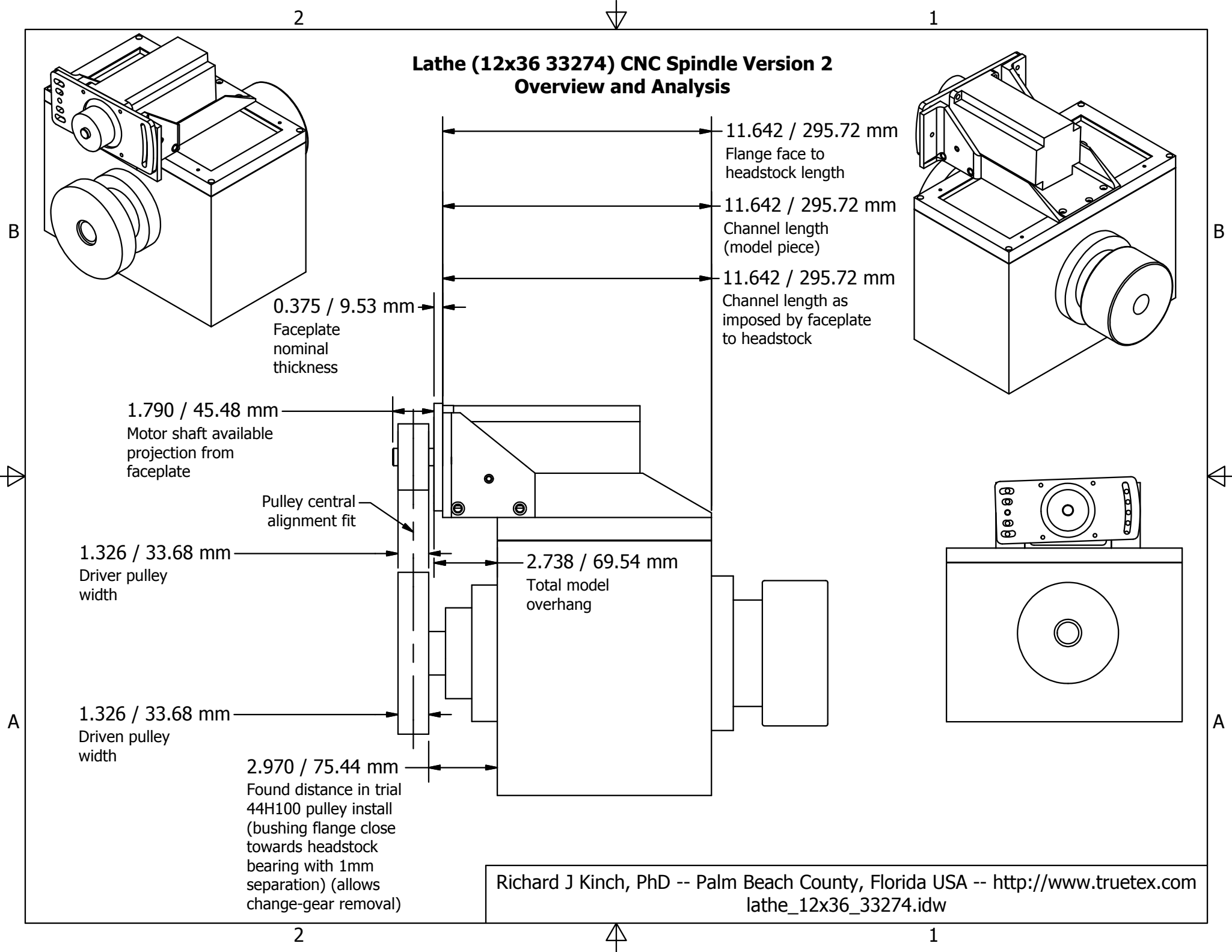


# Lathe (12x36 33274) CNC Spindle Version 2 Overview and Analysis



2

1

B

B

A

A

0.375 / 9.53 mm  
Faceplate  
nominal  
thickness

1.790 / 45.48 mm  
Motor shaft available  
projection from  
faceplate

Pulley central  
alignment fit

1.326 / 33.68 mm  
Driver pulley  
width

1.326 / 33.68 mm  
Driven pulley  
width

2.970 / 75.44 mm  
Found distance in trial  
44H100 pulley install  
(bushing flange close  
towards headstock  
bearing with 1mm  
separation) (allows  
change-gear removal)

11.642 / 295.72 mm  
Flange face to  
headstock length

11.642 / 295.72 mm  
Channel length  
(model piece)

11.642 / 295.72 mm  
Channel length as  
imposed by faceplate  
to headstock

2.738 / 69.54 mm  
Total model  
overhang

2

1