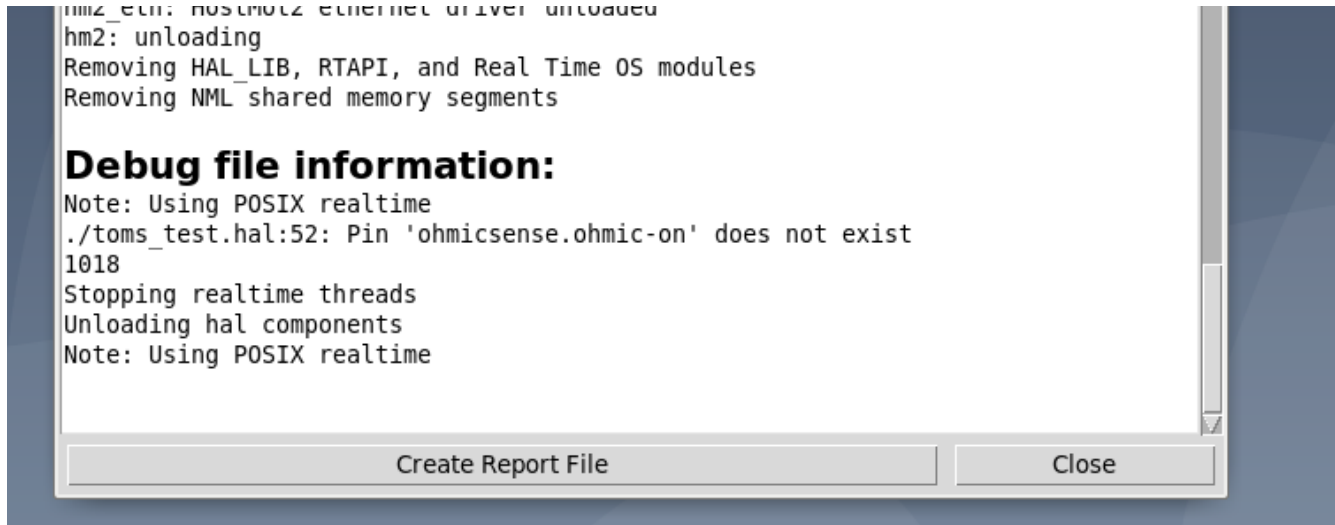


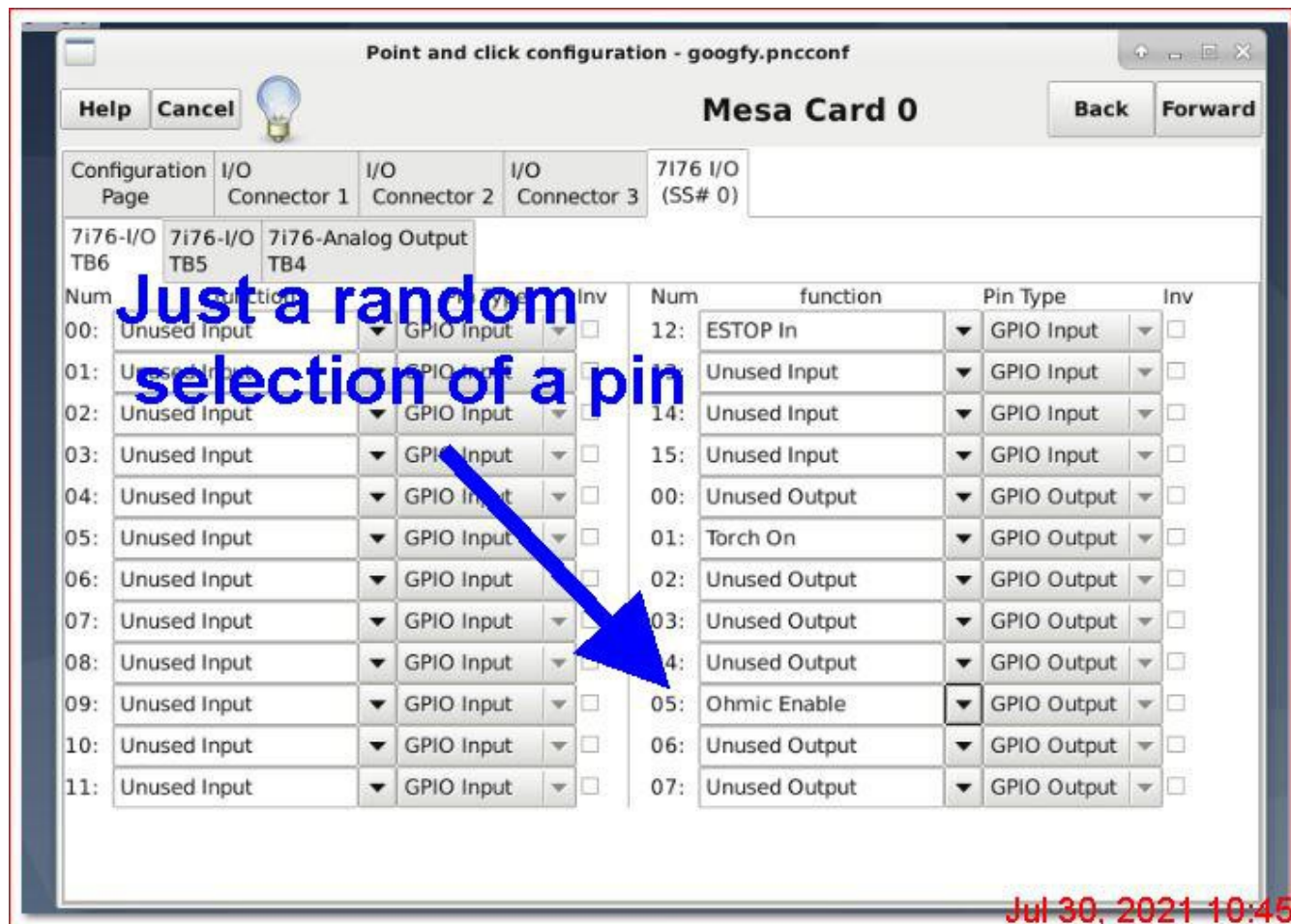
Hello

I placed the 2 lines in the Hal file and it failed to start the QTPlasmaC. It cited the lines where I had placed the added lines ( I tried 2 locations). So I remove them.



Next I started a dummy Pncconf to look at some things. First you cannot access encoder B as you can encoder A.

so I looked more you can select an input and select Ohmic enable.



I saved the dummy Hal file and looked at to see is there was a line for the Ohmic enable.

```
60 # --- PLASMAC:OHMIC-ENABLE ---
61 # external output signals
62 # --- PLASMAC:TORCH-ON ---
63 net plasmac:torch-on => hm2_7i76e.0.7i76.0.0.output-01
64 # --- PLASMAC:OHMIC-ENABLE ---
65 net plasmac:ohmic-enable => hm2_7i76e.0.7i76.0.0.output-05
66 # external input signals
67 # --- ESTOP-EXT ---
68 net estop-ext <= hm2_7i76e.0.7i76.0.0.input-12
69 #*****
70 # AYTS Y 10TMT 0
```

Now what that means or if its helpful I cannot answer that! I cannot say if it would be connected to the GUI pin. Since it was an input pin does it need an actual input connected for it to function.

We be very close to the finish line. Thanks for your help.

Have fun  
Tom