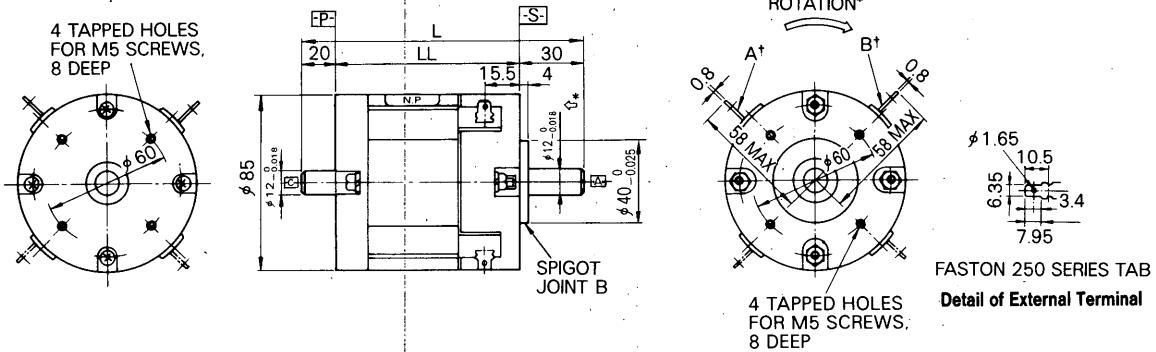


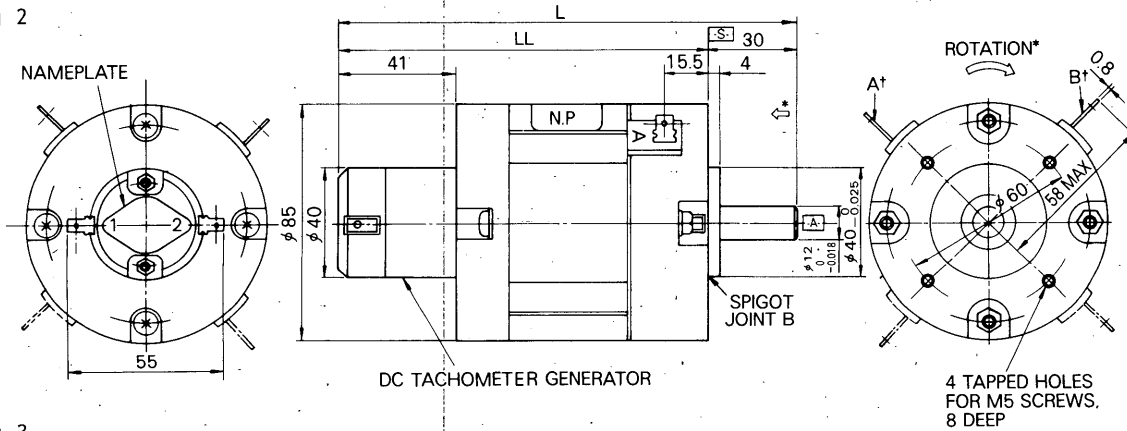
## 6. DIMENSIONS in mm (inches) (Cont'd)

(3) Type UGTMEM-06

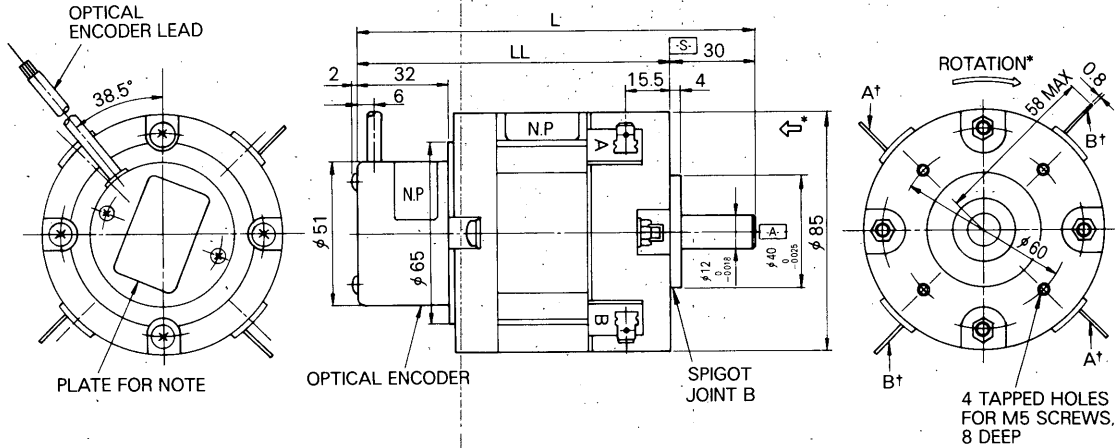
Drawing 1



Drawing 2



Drawing 3



Minertia Motor Type UGTMEM-	Dwg No.	L	LL	Approx Weight kg	Specifications
06SB2 06MB2 06LB4	1	128 135 156	78 85 106	1.6 1.7 2.5	Motor alone
06SB27S 06MB27S 06LB27S	2	149.4 156.4 177.4	119.4 126.4 147.4	1.9 2.0 2.8	With DC tachometer generator*
06SB23V 06MB23V 06LB43V	2	149.4 156.4 177.4	119.4 126.4 147.4	1.9 2.0 2.8	Type TG-3VC (3V/1000 r/min)
06SB40E 06MB40E 06LB40E	3	139 149 167	109 116 137	1.8 1.9 2.8	With optical encoder Type UTOPI-SE Type UTOPI-SJ Type UTOPI-SC

\*Output shaft rotates in the direction of the arrow when external terminal A are connected to the plus (+) side of power supply and terminal B to the minus (-) side.

For terminal connection of servomotor provided with four brushes, connect two terminals A to the plus (+) side and two terminals B to the minus (-) side.

†External terminal

\*For details, refer to Table 6.