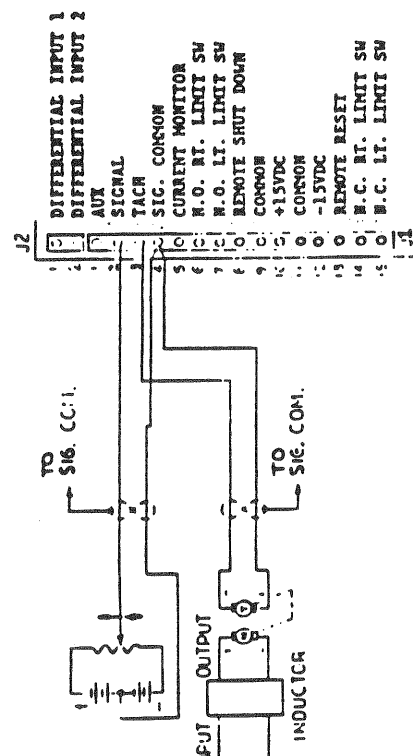
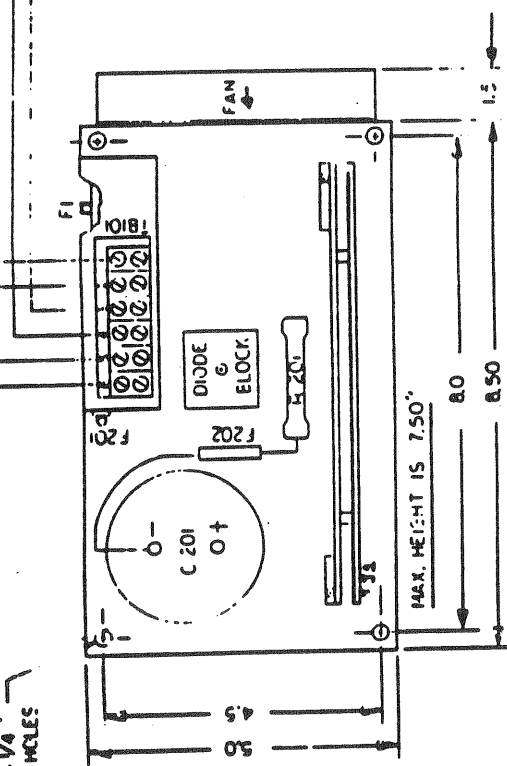


DESCRIPTION: A CHNG TB101V FROM 120VAC TO 72VAC

7/87

1Ø INPUT FROM SEC. OF 1Ø 120 VAC 50/60 HZ 1A PWR TRANS. 72VAC FUSE + 10% PWR.

MOUNTING HOLE DIA. 1/4" 24 HOLES



SEE/O ANJE CARD CONNECTION

- RECOMMENDED INSTALLATION PROCEDURE**
- CAUTION: Outputs at TB101 must be isolated from all other circuits and must not be grounded.
  - Use shielded wire on signal input leads. Connect shielded to signal common at J1-4.
  - Output at TB101-2 is (+) with respect to TB101-1 (mean J1-2 is (+) with respect to J1-4).

FUSE	DESCRIPTION
F1	3A6 2A USED ON 215 V P.S.
F201	MDA-20A 5B
F202	MOL3 1A INCULATED NEXT TO C201

SERVO DYNAMICS	
TITLE: INSTALLATION DRAWING	
SD1-1015-10-1	
SIZE: B	PSCH NO: 1010
SCALE:	REV: A
DATE: 11/1/84	DESIGNER: [Signature]
USER: [Signature]	DATE: 11/1/84

NOTE : UNLESS OTHERWISE SPECIFIED